



NDA

National
Development
Agency

indaba



NEWS
September 2018

In this edition...



2 NDA North West Provincial Office Moves To New Premises



3 Women Building One Brick At A Time In The Construction Industry



4 Springfontein Early Childhood Development Educational Materials Handover

ALBERTINA SISULU *Centenary* 2018

100 YEARS OF ALBERTINA SISULU:

Woman of Fortitude

WOMEN UNITED IN MOVING SOUTH AFRICA FORWARD



Celebrating Women Leadership

As we approach the month of October, which marks Mama Albertina Sisulu's centenary year, I would like to pay special tribute to the heroines of 1956 who paved the way for us. I would also like to give recognition to the women leaders of today, and especially those who play a vital role in the eradication of poverty throughout our continent and the world.

Women are the centre of all communities and development. This edition will highlight the transformation in the leadership of the National Development Agency and the impact of women led civil society organisations (CSOs) in communities.

Yours in development,
Mrs Thamo Mzobe
Chief Executive Officer



Mrs Thamo Mzobe
Chief Executive Officer



Company Secretary Appointed

The National Development Agency welcomes Lebogang Vashette Mahaye, who joins as Company Secretary. Lebogang has more than 15 years' experience in the corporate governance and legal sector. Previous positions she held include: Company Secretary for Tshwane Economic Development Agency; Legal Research Specialist in the Office of the President; Executive Head: Governance Support at the City of Tshwane; and Legal Researcher at the COSATU Parliamentary Office. She holds a B.LURIS and LLB from UNISA and is currently pursuing the CIS Board examination.

National Development Agency Women Leaders

GOVERNANCE



Board Chairperson:
Judy Hermans



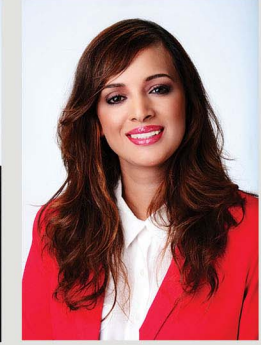
Board Member:
Bibi Khan



Board Member:
Sebenzile Matsebula



Board Member:
Makgoro Manny



Board Member:
Farzana Varachia

GOVERNANCE



Board Member:
Mashila Matlala



Board Member:
Thabi Shange

EXECUTIVES



Chief Executive:
Mrs Thamo Mzobe



Chief Financial Officer:
Cheryl Yeni



Chief Audit Executive:
Hajra Mansour

PROVINCIAL MANAGERS



Limpopo:
Gillian Mahange



Gauteng:
Mapule Phora



Eastern Cape:
Nokulunga Skeyi



KwaZulu Natal:
Yolisa Ndima

PROVINCIAL OFFICES

Lukhanji Masisebenzisane Secondary Cooperative consists of five primary cooperatives focused on agricultural activities located in Whittlesea, within Enoch Mgijima Local Municipality. The cooperative uses its 25 hectares of land to plant primarily maize and lucerne as well as vegetable crops. The R75 000.00 grant funding by the NDA was used to purchase protective clothing, seedlings, fertilizer, watering cans and growing medium. The cooperative supplies its produce to retail shops like Shoprite, Spar, Fruit and Veg in Queenstown and surrounding areas.

Mr Braam Hanekom, Board Member deployed for the Eastern Cape portfolio, conducted oversight visits to several funded cooperatives to observe progress, correct use of NDA funds and advise on further progress of the cooperatives.

NDA Board Member Visits Women-led Projects In The Eastern Cape



Mr Braam Hanekom, NDA Board Member, visited Lukhanji Masisebenzisane Secondary Cooperative

* Office Move Announcement

The North West National Development Agency office has moved from the Old Mutual Building at 127 Providence Street in Mmabatho. The address for new office is: 1st floor, IDT Building, 4059 Joule Street, Mahikeng.

COOPERATIVES

Ntirisano Sanitary Towel Cooperative – Mpumalanga

Ntirisano Sanitary Towel Cooperative was established in 2012 to address the challenge of access to hygiene and sanitary wear amongst young women and create employment for youth in Ludlow, Bushbuckridge. They approached different government departments to raise funding for sanitary towels. Department of Social Development made initial funds available which were used to buy sanitary towels which were distributed to the identified girls in partnership with the Department. The Cooperative made a decision to manufacture their own sanitary towels as well extend their offering to include: bath soaps, body lotion, and underwear (dignity packs).

In 2013, the cooperative applied for funding at the National Development Agency (NDA) for the construction of the sanitary towels factory. The project costs were more than the NDA threshold of two million and through its mobilisation programme NDA mobilised other stakeholders: Department of Economic Development (DEC), Department of Rural Development (DRD) and Department of Social Development (DSD) came on board. The initial NDA funding of R 1, 2 million went towards construction of the factory, DRD's funding of R 3, 5 million went towards buying the machinery and DSD's R 1 million went towards buying the materials for dignity packs.

Ntirisano Sanitary Towel Cooperative has 11 members, nine females and two males.



▲ Ntirisano Sanitary Towel Cooperative



➤ Ttutfukani Brick Making Cooperative

Mapojotana Cooperative - Free State

The Mapojotana Cooperative is a food security programme, founded in 2012 by Mme Pontsho Mokoena, that grows vegetables and provides daily nutritious meals to about 400 residents of Silahlwiwe, as well as neglected and frail elderly persons in the community. Silahlwiwe, meaning abandoned, is an informal settlement located within the Bohlokong Location in Bethlehem, a small town in the Free State - under the jurisdiction of the Dihlabeng Local Municipality.

The R300 000,00 grant funding from the National Development Agency (NDA) went towards the establishment of a food garden, crop production, office equipment and security features, sewing and kitchen equipment. The Mapojotana Cooperative employs 29 people on a full time basis (6 male and 23 women) across all their programmes, with 11 volunteer workers (4males and 7 females) and jointly they all support over 200 persons in their households.

On site is a vegetable garden, feeding hall, kitchen, sewing room, office and recently a crèche to look after the children of Silahlwiwe. The NDA is assisting the Cooperative with registration and formalising the crèche to meet all requirements necessary – for now it mostly caters for the care and safekeeping of the children. Three teachers have already completed the Basic Early Childhood

Development Training that was provided by the NDA, in partnership with Tshepang Educare Centre, as well as the supply of educational material used to teach and stimulate the children. The NDA funding also made it possible for the youth, identified within the community, to access Basic Computer Skills training.

Over the years, Mapojotana has received recognition awards, most recently the Department of Agriculture and Rural Development for Best CNDC 2017/18.



Women Building One Brick At A Time In The Construction Industry

Lonwabo Ganelo

The construction industry in South Africa plays a pivotal role in the economy of the country. The industry employs about 40% of the country's population according to stats presented by the South African government; however, male employment far supersedes the employment of females in this industry, as is the case in many other industries in the country. It is because of these many boundaries women face in the industry that the Ttutfukani Brick Making Cooperative was formed.

The women of Kwanyamazane location in Mpumalanga came together and formed the Ttutfukani Brick Making Cooperative to defy the odds and prove that women have the necessary skills to advance in the construction industry, not only as employees, but also creators of employment.

Inspired by a passion to improve their lives as unemployed women and the desire to provide for their families, Mrs Lindiwe Msibi (the deputy chairperson of Ttutfukani Brick Making Cooperative) gathered 24 women from her community and they registered the cooperative in 2008. With no funding and skills to move the cooperative forward, they got in touch with their local government and the National Development Agency (NDA) to seek assistance.

The Mbombela Local Municipality provided the cooperative with land where they could advance the cooperative and have space to grow for large production. The NDA then grant funded Ttutfukani with R970 000.00 in 2012. The NDA's funds warranted the cooperative to build an office, buy office equipment, build a storage house, buy a tipper truck, get more raw materials and install a borehole. Through the capacitating efforts of the NDA, Ttutfukani also got a mentor who worked with them for a 12-month period to train them on manufacturing different kinds of bricks and the operation of the new machinery. They manufacture hollow, stock and maxi bricks.

The Ttutfukani Brick Making Cooperative currently has 31 full time employees, majority of which are women. The cooperative prides itself in being able to provide for so many families in a community that is ridden with unemployment and poverty, particularly for youth and women. Part of the challenge they face is that the industry is competitive and the rate of business turnover in that area is high. They are sometimes unable to meet the demand of the industry because of inadequate machinery and other capacity issues.

Despite these challenges, one cannot deny the resilience of the founders of the Ttutfukani Brick Making Cooperative and the strides they continue to make. Now that women have made inroads, it is time for men to recognise these women, to work together, to grow the industry and make sure cooperatives led by women also grow and develop communities. The NDA continues to work with cooperatives like Ttutfukani that challenges the status quo and at the same time improves the lives of many in poor and remote communities.

Empowered Bakery Ready to Serve the Market

The Leratong Cooperative is a fully equipped and resourced bakery located in Tsheseng Village of Qwa making bread and rolls daily. All women members possess strong technical skills on the usage of equipment, which enables efficient delivery of products. They can provide volumes of quality products, because of the improved technology machinery purchased, following funding of R906 676.00 provided by the National Development Agency. The NDA also ensured improved management of operations by training all six women who run the bakery, as well as the provision of a mini-van for quick deliveries. All these factors enable the Leratong Cooperative to keep their costs low due to efficiencies, time management and resource wastage control, which allow for competitive pricing of their products.

The Cooperative currently caters and provides goods for SASSA pay points, crèches and schools in and around Qwa Qwa. They would like to expand their market to spaza shops, hospitals, municipal and the Department of Social Development food security programmes. "We are underutilising our resources and capabilities; we have the ability to do so much more. Those who have consumed our products are happy with our products. Others do not support our products, as they are not branded; they prefer competitor products with emblems. This is very frustrating for us, as we are right here amongst them providing quality products at a competitive price – all we need is their support," says Ntsejwa Nkone.

Packaging is something the cooperative can improve on, in response to their market needs, however, they firstly require the market to establish a regular income and possibly expand their offerings. The area they operate in is prone to weekly power cuts – which interrupts their supply. They would like to secure funds to purchase a generator to reduce the dependency on municipal power supply.

Leratong Cooperative
Tsheseng, Qwa-Qwa
Contact: Ntsejwa Nkone
on 073 347 9697



Members of Leratong Bakery in Qwa Qwa



The Mayor, parents, governing body, ECD forums and primary school representatives attended the handover ceremony

Springfontein Early Childhood Development Educational Materials Handover

The Free State Provincial Office handed out learning and play material to the only two early childhood development centres (Thatohatsi Educare and Ibuyambo Day Care) in Maphodi, Springfontein within the Xhariep district.

"90% of brain development in children occurs before the age of five and only 10% brain development occurs beyond the age of five. It is imperative that the correct stimulation is given to the children whilst they are still young. We are here to ensure that the children at this township receive equal opportunity and holistic development by providing these two crèches with the same materials," says Itumeleng Kwenane, Provincial Manager in the Free State.

This is Mrs Elisa Tana (47yrs) with her grandchildren who attend Thatohatsi Edu Care in Maphodi. Her own six children attended the same early childhood centre, one is now a police officer, and another is a nurse. The others are finishing off high school and one is studying Engineering at Motheo College.



Ntswaki Mthimkhulu



Mrs Elisa Tana

Ntswaki Mthimkhulu (29), Pre-Grade R teacher at Thatohatsi Edu Care. She is currently completing her level 4 ECD training. She teaches 33 children and would like to encourage parents to send children to ECD centres, particularly full attendance at Grade R level as this prepares children for formal schooling. She wishes to complete her Diploma in Teaching.

Editor: Lesego Ranchu Contributor: Lonwabo Ganelo

To be added to the iNDABA mailing list,
please contact us at indabaeditor@nda.org.za

Contact Us:

Tel: 011 018 5500 • Email: indabaeditor@nda.co.za • Web: www.nda.org.za

